

PRODUCT NUMBER
75970-YXX-XXLF

WHEN REQUIRED, ADD SUFFIX LETTER "LF"
INDICATES THE PRODUCT IS RoHS
COMPATIBLE, SEE NOTE 7

TOTAL NB OF POS (02 TO 36 POS)

PLATING PIN STYLE

1 = 0.76µm GOLD/GXT,
OVER 1.27µm Ni MIN

8 = 0.38µm GOLD/GXT
OVER 1.27µm Ni MIN

3 = 3.81µm TIN/LEAD
OVER 1.27µm Ni MIN

- WHEN "LF" IS REQUIRED, 2µm MATTE
TIN OVER 1.27µm MIN NICKEL IS
PROVIDED INSTEAD OF TIN-LEAD

NOTES:

- HOUSING MAT'L : HIGH TEMPERATURE THERMOPLASTIC. UL94V-0 COLOR: BLACK.
- PIN MATERIAL : PHOSPHOR BRONZE.
- 12N MIN RETENTION IN EITHER DIRECTION.
- TO DETERMINE DIMENSIONS :
N = NUMBER OF POSITIONS PER ROW
EXAMPLE : 8 POS PER ROW, $N \times 2.54 = 20.32\text{mm}$
- FOR STANDARD SELECTIVE GOLD PLATED PRODUCTS SEE DRAWINGS 54112 & 54122.
- STANDARD PACKAGING IN POLYBAGS.
- RoHS COMPATIBLE PRODUCT SPECIFICATIONS

a - PLATING:

- "LF" MEANS THE PRODUCT IS LEAD-FREE,
2µm MINIMUM MATTE TIN OVER 1.27µm
MINIMUM NICKEL UNDERPLATE.

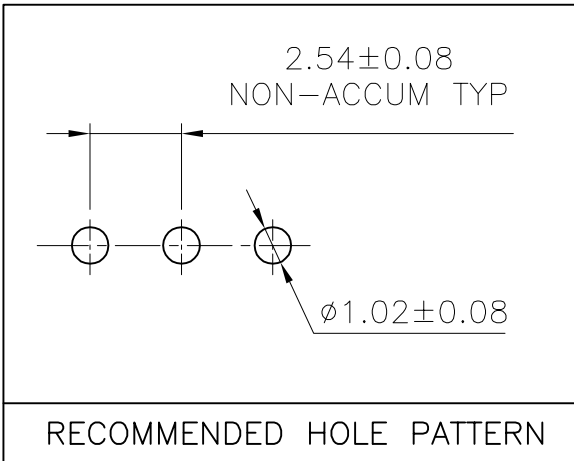
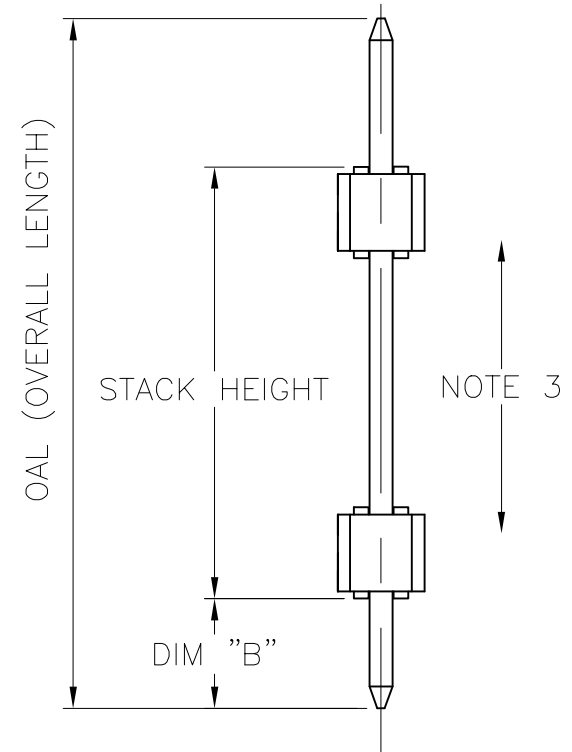
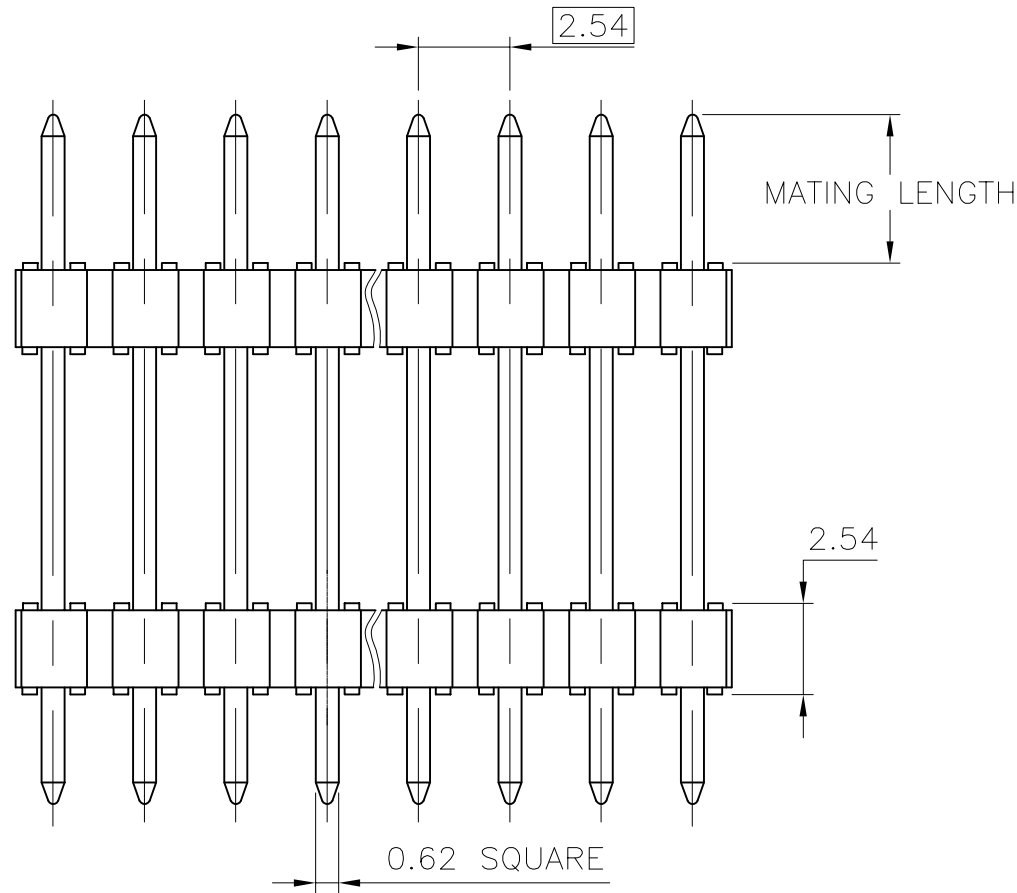
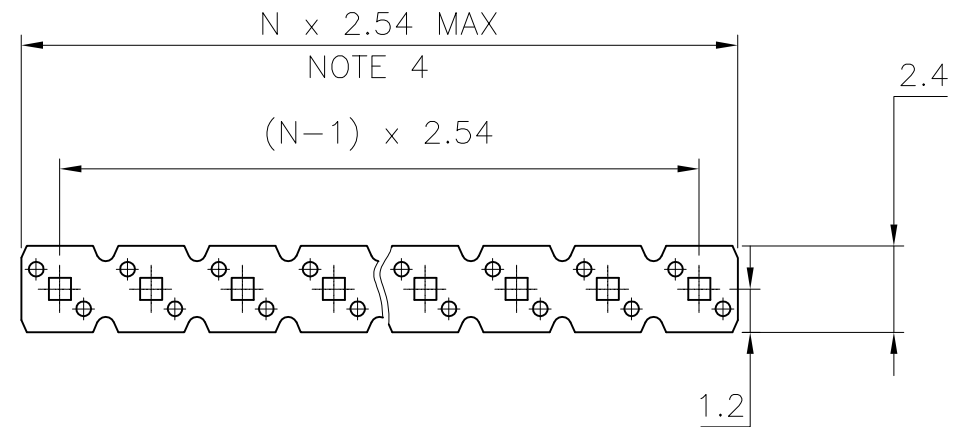
b - MANUFACTURING PROCESS COMPATIBILITY

- THE HOUSING WILL WITHSTAND EXPOSURE TO
260°C ±5°C SOLDER BATH TEMPERATURE FOR
5 SECONDS IN A WAVE SOLDER APPLICATION
WITH A 1.6mm MIN THICK CIRCUIT BOARD.

c - LABELING:

- MEETS PACKAGING SPECS AS PER GS-14-920

d - LEGAL STATEMENT: SEE GS-22-008



mat'l. code SEE P/N		surface ISO 1302		tolerance ISO 406 ISO 1101		projection		product family BSTIK	
ltr	ecn no	dr	date	tolerances unless otherwise specified		mm		title HEADER STR,SR DOUBLE BODY	
CR	F20313	LMU	02.05.06	angles	x.xx ±0.30	mm		dwg no 75970	
CS	F04-0105	LMU	04.01.07	linear	x.xx ±0.13	scale 5:1		sheet 1 of 2	
CT	F04-0385	LMU	04.12.23		x.xxx ±0.05	FCJ		size A3	
CU	F06-0196	LMU	06.06.20	dr	COMPAGNON J	94.07.01		type CUSTOMER Drawing	
CV	F06-0301	LMU	06.10.13	enrg	JMC	95.09.25			
CW	F08-0148	JCO	08.05.27	chr		95.09.25			
				appd	JMC				
sheet index	revision sheet	CW	BT						
		1	2						



Copyright FCI

APPLICATION SPECIFIC				
PIN STYLE	MATING LENGTH ±0.2	STACK HEIGHT ±0.25	"B" ±0.25	("OAL") REF
01	9.99	13	3.05	26.04
04	6.33	6.5	3.05	15.88
05	11.69	11.3	3.05	26.04
06	8.71	19.76	2.65	31.12
08	5.51	8	3.05	16.56
09	6.61	11.3	3.05	20.96
10	3.14	19.76	3.14	26.04
11	3.55	16.4	3.55	23.5
12	5.72	5.08	2.54	13.34
13	6	7	3.56	16.56
15	7.46	9.5	4	20.96
16	5.59	13	3.05	21.64
17	9.5	10.45	3.55	23.5
18	5	16.04	5	26.04
20	5.6	6.5	2.88	14.98
21	7.5	10.45	3.01	20.96
22	7.5	15.45	3.09	26.04
23	7.02	5.08	2.88	14.98
25	17.3	15.7	3.2	36.2
26	9.1	15.7	3.2	28
27	3.5	10	3.06	16.56
28	2.5	6.35	2.5	11.35
29	8.23	16	3.2	27.43
30	2.8	13.7	2.8	19.3
31	3.11	5.08	3.11	11.3
34	9.98	6.5	9.94	26.42

APPLICATION SPECIFIC				
PIN STYLE	MATING LENGTH ±0.2	STACK HEIGHT ±0.25	"B" ±0.25	("OAL") REF
36	5.9	10.39	3.01	19.3
37	3.86	6.7	3.76	14.32
40	11	8.48	11	30.48
41	9.45	5.5	2.7	17.65
45	23.6	11.3	3.05	37.95
51	5.33	21.5	2.48	29.31
52	6.77	25.9	3.05	35.72
53	14.6	8	9.4	32
54	11.6	11	9.4	32
55	14.77	15.7	3.05	33.52
56	10	19	3	32
58	6.5	30.5	3	40
61	9	25.9	3.05	37.95
68	6.87	16.5	3.05	26.42
69	6.87	13	3.63	23.5
70	5.58	10.3	2.54	18.42
71	5.81	7.7	3.05	16.56
72	6.9	10.45	2.71	20.06
74	11.45	13.5	3.05	28
75	3.1	11.45	3.1	17.65
78	12.5	7.5	3	23
80	10.7	16.5	3	30.2
85	6.75	8	2.9	17.65
87	14	32	4	50
90	7.8	33.5	3.15	44.45
93	3.3	6.5	3.3	13.08

APPLICATION SPECIFIC				
PIN STYLE	MATING LENGTH ±0.2	STACK HEIGHT ±0.25	"B" ±0.25	("OAL") REF
94	3.3	7.72	3.3	14.32
95	12.9	5.08	3	20.96
99	8.7	9.02	8.7	26.42
AA	4.05	10.5	3.1	17.65
AB	4	29	3.2	36.2
AJ	1.4	6.5	3.4	11.3
AK	11	6	11	28
AL	8.5	6	8.5	23.0
AM	5.6	29.3	3.05	37.95



Copyright FCI

mat'l. code		surface <input checked="" type="checkbox"/> ISO 1302 <input type="checkbox"/> ISO 406 <input type="checkbox"/> ISO 1101		tolerance <input checked="" type="checkbox"/> tolerances unless otherwise specified		projection		product family BSTIK	
ltr	ecn no	dr	date	angles linear		mm		title	
BS	F06-0196	LMU	06.06.20					HEADER STR,SR	
BT	F06-0301	LMU	06.10.13					DOUBLE BODY	
						scale		dwg no sheet 2 of - size	
BM	F60609	JMC	96.08.28	dr	COMPAGNON J	94.07.01			
BN	F20116	LMU	02.01.15	enr	PHAMVAN JM	95.03.21			75970 A3
BP	F20313	LMU	02.05.06	chr	COMPAGNON J	95.03.21			
BR	F04-0105	LMU	04.01.07	appd	JM P	95.03.21			
sheet index	revision sheet								